

THE PROMENADE  
DOCKLANDS

THE WATERFRONT BAR



THE PROMENADE  
DOCKLANDS

# WATERFRONT BAR

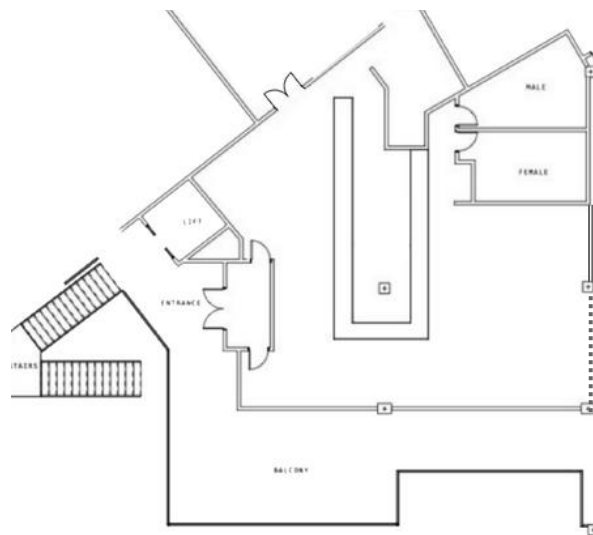
## THE PROMENADE

DOCKLANDS

The Waterfront Bar features a seventeen metre black stone bar with sweeping views of the harbour and a private undercover terrace adorned with fairy lights. Pull open the bi-fold doors for the perfect combination of indoor and outdoor entertaining. It is the perfect space for your next private event or celebration.

Waterfront Bar = 180sqm  
Waterfront Balcony = 40sqm  
Total = 220sqm

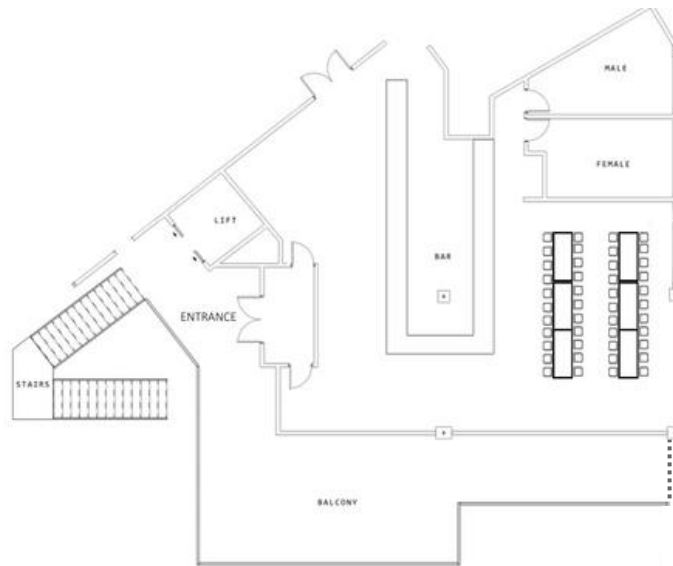
Standing Cocktail: up to 150 guests





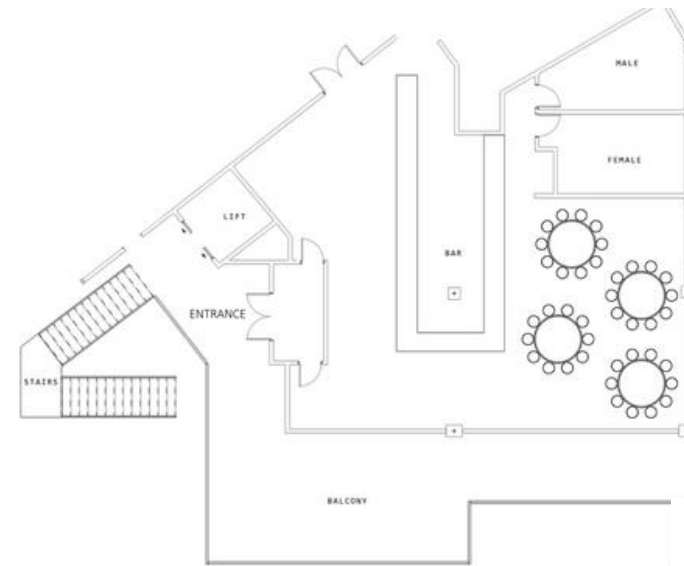
# WATERFRONT BAR

THE PROMENADE  
DOCKLANDS



## LONG TABLES

2 long tables | 44 pax  
Up to 22 seats per table



## ROUND TABLES

4 round tables | 48 pax  
Up to 12 seats per table





## KEY FEATURES

- Exclusive use with private bar and bathrooms
- Dimmable lighting and hanging feature lanterns
- Undercover balcony with ceiling fairy lights
- Staircase and lift accessibility
- Welcoming entrance foyer
- In-house sound system & wireless microphone included
- Generous ceiling heights for a spacious feel
- Flexible layout options for seated or cocktail events
- Late-night licence until 3am

## FAQS

### Are there any noise restrictions?

Yes – we have a sound limit of 96dB, which your DJ will confirm is plenty loud for a great party atmosphere. If the bi-fold doors are open during your event, they will be closed at 10:00pm to assist with noise management. Balcony access remains available.

### What AV is available?

All rooms come equipped with a built-in sound system and a wireless microphone. We also offer 85” screens for hire and have additional custom lighting options available. For a full overview, please refer to the venue’s asset list.





# CONTACT

Enquire about your next corporate, private or celebration event today with The Promenade Docklands.

E: [events@thepromenadedocklands.com.au](mailto:events@thepromenadedocklands.com.au)

W: [www.thepromenadedocklands.com.au](http://www.thepromenadedocklands.com.au)

A: Level 1, 78 Newquay Promenade Docklands VIC 3008

  @thepromenadedocklands

THE PROMENADE  
DOCKLANDS

